



WORLD CUP

RÉGION 
DENTS DU MIDI



ROADBOOK

ISMF ATHLETES

A WORD OF WELCOME



En route for a second edition!

Motivated by the rousing success of our first ski mountaineering World Cup event, the organising committee jumped at the opportunity to sign on for an encore performance and a second edition in 2023.

For the Morgins Ski Mountaineering World Cup 2023, we had set our sights on an even bigger programme, with the addition of a vertical race along with the sprint and individual events.

Everything was ready, except for one vital element; without snow there could be no race! Too determined to let one misfortune stop us, we made a commitment to reschedule the event from February 7th to the 10th, 2023.

We could not have done this without the unfailing support of the volunteers who answered the call to duty. They deserve our thanks and gratitude - their presence and support are essential to the success of such an event.

This consequential schedule change has resulted in some modifications to the original programme. The rescheduled event will start on a Tuesday and finish on a Friday, and we have had to replace the festivities village concept with a smaller event space for the official ceremonies.

The programme will open with the sprint, to be held in the heart of the village. This will be a special attraction - as a brand-new discipline in the next Olympic Winter Games, the fast paced and challenging sprint has been attracting a lot of interest from athletes looking to hone their skills.

One thing remains unchanged - 'skimo' in Morgins is not just for the pros! Once again, amateur racers will also be able to participate in vertical and individual open races.

The organising committee is dedicated to extending a world-class welcome to the international ski-mountaineering community with quality events the participants will remember forever. We extend a heartfelt thank you to our numerous volunteers and staff for their commitment and availability in this endeavour.

Finally, we are grateful to our local political authorities, sponsors, and other contributors for their indispensable support of this event.

Welcome to Morgins, where we love ski-mountaineering!

Charly Rey-Mermet

President of the Organising Committee

SITE MAP



SALLE DE LA JEUR

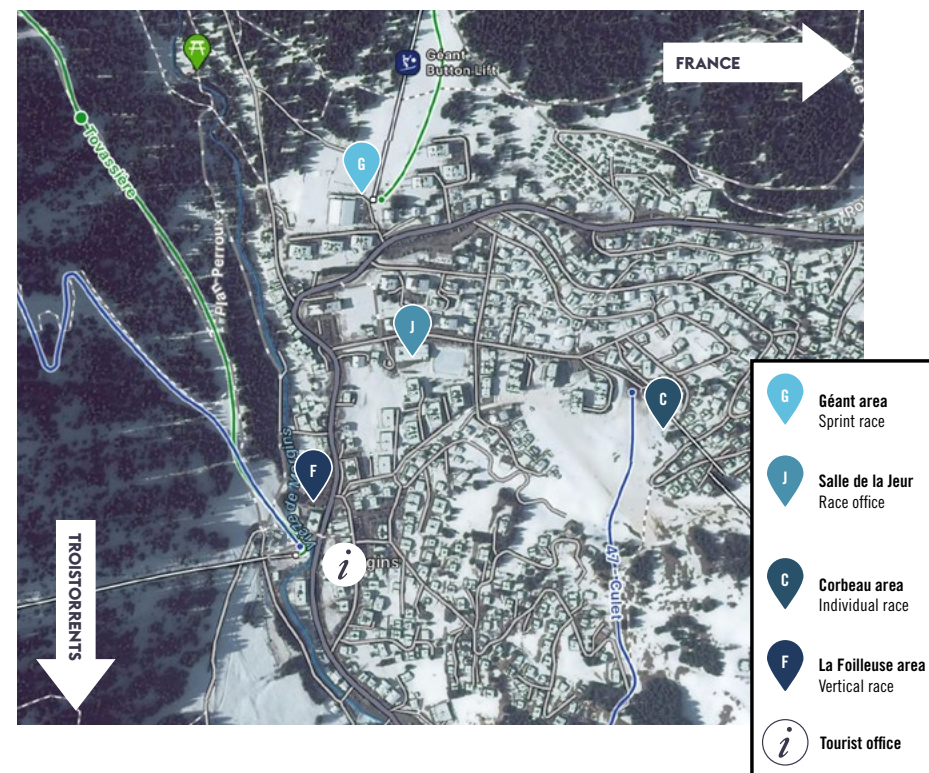
- Race office
- Accommodation key pick-up
- Bib distribution
- Accreditation centre
- Lunch and dinner
- Official ceremonies
- Team Captain meetings



GPS coordinates · Salle la Jeur › race office

46.238031, 6.853983 · Route de la patinoire 6, 1875 Morgins

EVENT SITES



PROGRAMME



Team reception Salle de la Jeur	14:00 - 19:00
Team Captain Meeting Sprint + Vertical	18:00 - 19:00
Dinner	19:00 - 21:00

*This programme is subject to modification.
Teams will be advised.
Up-to-date programme at rddmworldcup.ch*

Lunch	10:00 - 15:00
Sprint race - Géant	
› Reconnaissance	13:04 - 13:19
› Qualifications	
› Women	13:34 - 13:45
› Men	13:49 - 14:15
› ¼ Finals	
› Women	14:31
› Men	14:58
› ½ Finals	
› Women	15:45
› Men	16:08
› Finals	
› Women	16:28
› Men	16:40
Flower ceremony	16:50
Dinner	19:00 - 21:00

Lunch	12:00 - 14:00
Vertical race - Foilleuse	
› Women	16:45 - 17:45
› Flower ceremony	17:15
› Men	17:20 - 18:20
› Flower ceremony	17:50
Results ceremony	19:00 - 19:30
ISMF Sprint & Vertical Race	
Dinner	19:30 - 21:00

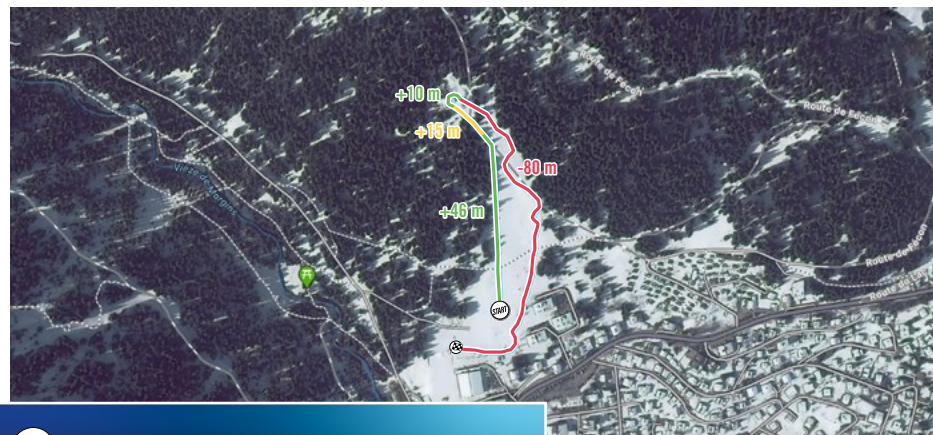
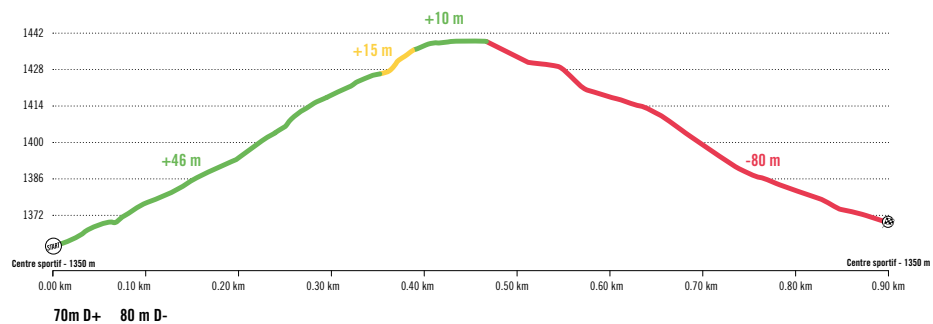
Individual reconnaissance	08:00 - 12:00
Lunch	12:00 - 14:00
Team Captain Meeting Individual	18:00 - 18:30
Dinner	18:30 - 21:00

Individual race - Corbeau	
> Men	09:00 - 11:30
> Women	09:20 - 12:00
Flower ceremony just after the 3rd competitor arrives	
Lunch	11:30 - 13:30
Results ceremony Pro / ISMF race	13:15 - 13:45

RACECOURSES

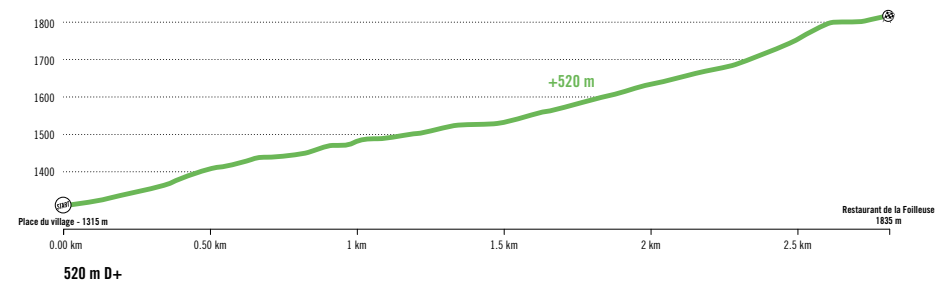
Racecourses may be modified.
Teams will be advised.
Up-to-date itineraries at rddmworldcup.ch

SPRINT RACE



START GPS coordinates · 46.237339, 6.850662

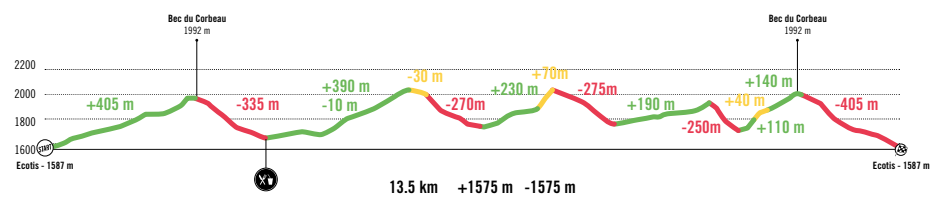
VERTICAL RACE



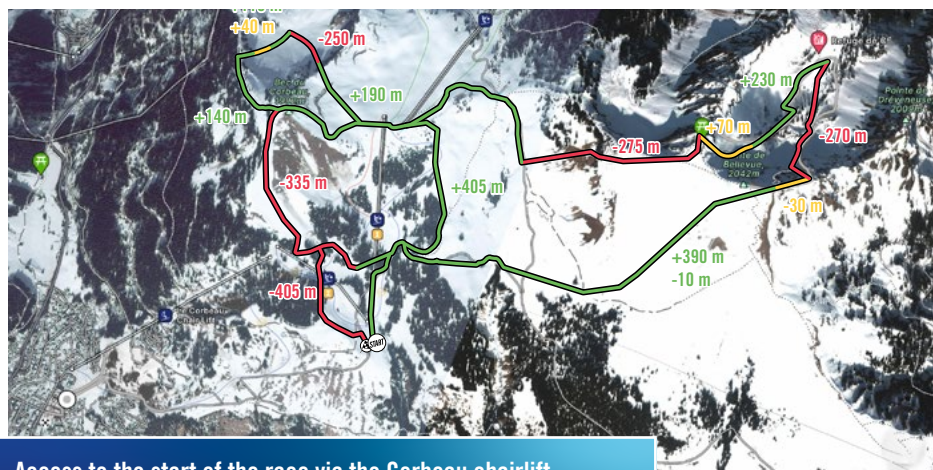
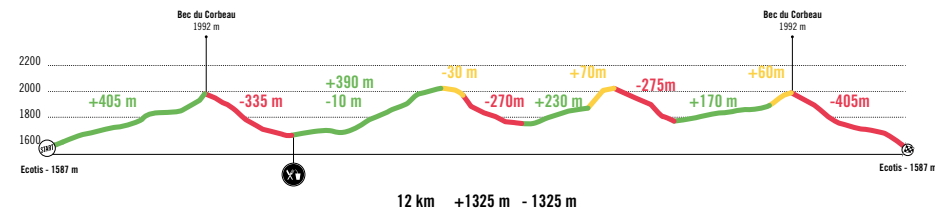
START GPS coordinates · 46.236702, 6.856801



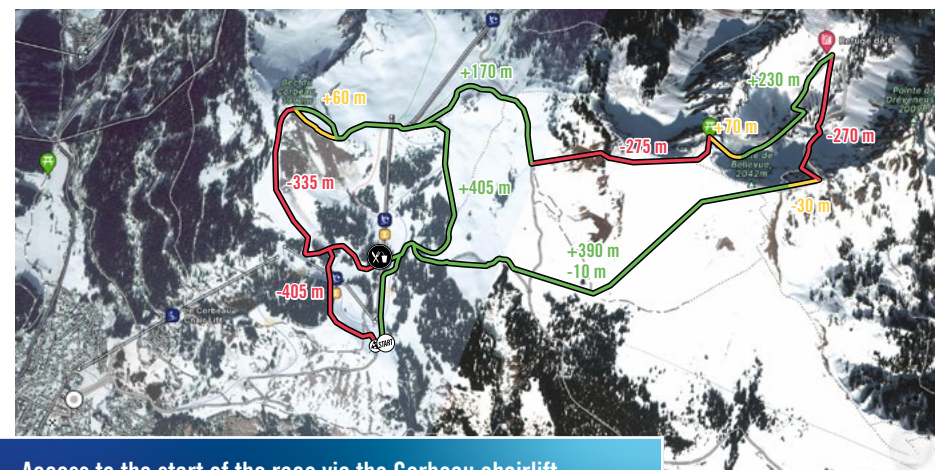
INDIVIDUAL RACE MEN



INDIVIDUAL RACE WOMEN



Access to the start of the race via the Corbeau chairlift
GPS coordinates - 46.241181, 6.854283



Access to the start of the race via the Corbeau chairlift
GPS coordinates - 46.241181, 6.854283

RACE OFFICE & ACCREDITATION


Race office opening hours

Salle de la Jeur
Route de la Patinoire 6

Monday February 6th	14:00 - 19:00
Tuesday February 7th	10:00 - 21:00
Wednesday February 8th	11:00 - 15:00 & 18:00 - 21:00
Thursday February 9th	12:00 - 14:00 & 17:30 - 21:00
Friday February 10th	08:00 - 14:00

Upon arrival in Morgins, teams should report to the race office at the Salle de la Jeur. On presentation of an official document (passport or ID card), athletes and staff will receive an accreditation to access event areas and instructions for accommodation.

▲ No accreditation will be issued without the presentation of an official identity document.

**WÜRTH MODYF**
ISMF WORLD CUP
SKI MOUNTAINEERING

ATHLETES

1

Race, Start & Finish Area

2


Lift Area

5

Awards Area

6

Food Area

**REGIONS DENTS DU MIDI**
Parcs de Savoie

example

**WÜRTH MODYF**
ISMF WORLD CUP
SKI MOUNTAINEERING

Programme

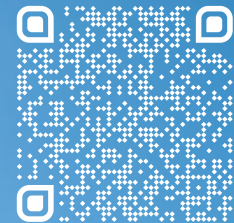


Roadbook



**REGIONS DENTS DU MIDI**
Parcs de Savoie

ISMF RULES & REGULATIONS



Click here





WORLD CUP
RÉGION 
DENTS DU MIDI



Charly Rey-Mermet · Organising Committee President

+41 79 353 89 37

charly@rey-mermet.ch

Yannick Ecoeur · Technical & Race Director

+41 79 236 57 13

y_ecoeur@bluewin.ch

Elsy Bellon · Secretary

+41 79 466 68 50

elsy.bellon@netplus.ch

